

COMPACT® Pendant Arm Series 4
COMPACT® Pendant Arm Series 4, Type 12

Industry Standards

NEMA/EEMAC Type 12
IEC 60529, IP55
DIN 40050

Application

A heavier version of the Series 2 Pendant Arm, the COMPACT® Series 4 Pendant Arms are equally flexible in allowing operators to move controls into and out of position, but they can accommodate heavier weight loads. At 3.3 ft. (1 m), System 50 in the Series 4 holds 224 lb. (101.8 kg), System 60 holds 281 lb. (127.7 kg) and System 80 holds 337 lb. (153.2 kg).

Choose the system that best fits your enclosure:

- **System 50 and System 60** are recommended for use with CC2000, CC3000, CC4000, CONCEPT HMI and Consolets.
- **System 80** is recommended for use with CONCEPT HMI and PROLINE Sloped Front Enclosures.

Standard Coupling or Standard Elbow Coupling

System	Dia. M (mm)	Dia. M (in.)	Dia. N (mm)	Dia. N (in.)
50	8	0.33	51	2.01

Dimensions for Cutouts

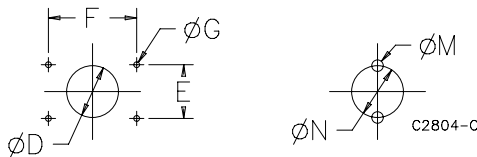
System	50 (mm)	50 (in.)	60 (mm)	60 (in.)	80 (mm)	80 (in.)
Set-Up Joint						
Ø D MAX	70	2.75	70	2.75	105	4.13
E	88	3.47	97	3.82	122	4.82
F	88	3.47	97	3.82	122	4.82
Ø G	11	0.43	11	0.43	13	0.51
Wall Joint or Cable Wall Joint						
Ø D MAX	50	1.97	60	2.36	80	3.15
E	50	1.97	60	2.36	80	3.15
F	107	4.21	115	4.53	138	5.43
Ø G	10	0.41	10	0.41	13	0.51
Wall Flange or Base Bracket						
Ø D MAX	70	2.75	70	2.75	105	4.13
E	88	3.46	93	3.66	122	4.80
F	88	3.46	93	3.66	122	4.80
Ø G	11	0.43	11	0.43	13	0.51
Flange Coupling or Flange Elbow Coupling						
Ø D MAX	51	2.01	65	2.56	91	3.58
E	60	2.36	60	2.36	80	3.15
F	60	2.36	60	2.36	80	3.15
Ø G	7	0.26	7	0.26	7	0.26
Angle Adapter Plate						
Ø D MAX	51	2.01	65	2.56	91	3.58
E	80	3.15	80	3.15	80	3.15
F	120	4.72	120	4.72	120	4.72
Ø G	7	0.26	7	0.26	7	0.26

Specifications

- Heavy cast steel and cast aluminum couplings and heavy-wall steel tubing provide excellent structural strength
- Each system includes multiple coupling types and three standard tube lengths (.5 m, 1 m and 2 m) which combine to form numerous configurations
- Steel tubing has 5-mm (0.2-inch) wall thickness. Tubing is cold-formed, welded square and rectangular steel tubes.
- Tubing provides structural integrity and acts as a conduit for equipment wiring
- Removable access plates (provided with set-up joint, elbow and elbow couplings) simplify cable installation inside tubing
- Heavy-duty bearings in all movable joints for convenient, smooth operation and enhanced durability to withstand stresses of repeated use
- Deep tube fittings in all couplings
- Adjustable setscrews allow for accurate alignment of supporting tubes
- Optional pedestal base available
- Gasket is oil-resistant neoprene

Finish

Couplings are RAL 7035 light-gray polyester powder paint. Access plates and tubing are light-gray. Bellows are black.

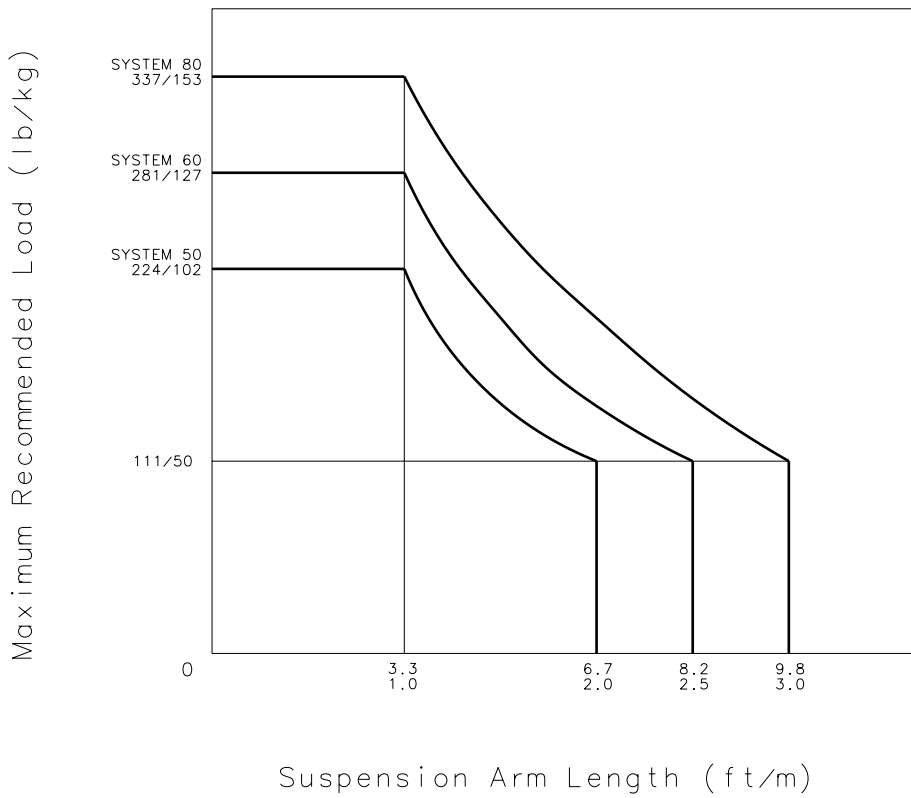
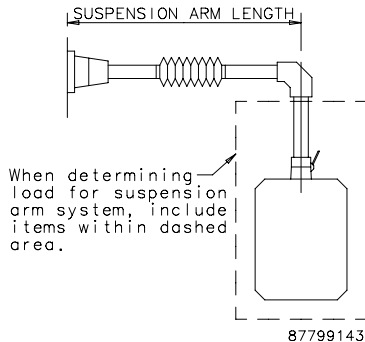
Standard Cutouts for Mounting


COMPACT® Pendant Arm Series 4

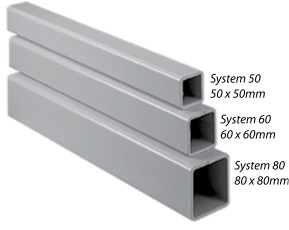
System Load Capacity

The Series 4 Pendant Arm load graph is the result of load capacity tests. Please contact Hoffman for specific application information.

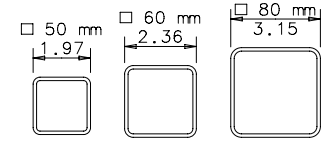
Load Diagram



89001155

COMPACT® Pendant Arm Series 4
Tubes


Square and rectangular tubes are cold-formed, hollow, welded steel with 5-mm wall thickness. Finish is RAL 7035 light-gray polyester powder paint. Tubing provides structural integrity and acts as a conduit for equipment wiring. Available in 500-, 1000- and 2000-mm lengths. All pendant arm connections are sized to fit appropriate tube sizes.



System 50 System 60 System 80
87799136

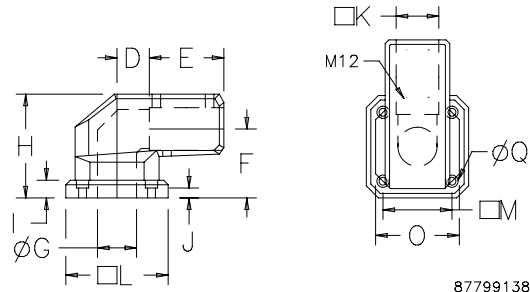
Bulletin: CS4

Catalog Number	System	Size mm/in.	Actual Length mm/in.	Weight (lb.)	External Dimensions mm/in.	Wall Thickness Dimensions mm/in.	Inside Cross Section (sq. cm)	Inside Cross Section (sq. in.)
CCS8T5	80	80 x 80	489	13.0	80 sq.	5	49	7.60
		3.10 x 3.10	19.25		3.15	0.20		
CCS8T10	80	80 x 80	991	24.5	80 sq.	5	49	7.60
		3.10 x 3.10	39.00		3.15	0.20		
CCS8T20	80	80 x 80	1988	49.0	80 sq.	5	49	7.60
		3.10 x 3.10	78.25		3.15	0.20		

Set-Up Joint


Cast iron finished with RAL 7035 light-gray polyester powder paint. Mounts equipment to horizontal surface. Permits pendant arm to be rotated or turned 306 degrees. Pivot bearing is maintenance-free. Setscrews, removable access plate and gasket are included. Mounting hardware is not provided.

Bulletin: CS4



Side View

Top View

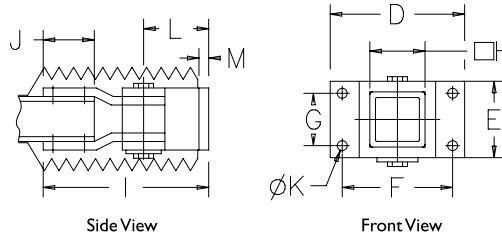
87799138

Catalog Number	System	Leach side mm/in.	H mm/in.	D mm/in.	E mm/in.	F mm/in.	Dia. G mm/in.	I mm/in.	J mm/in.	K each side mm/in.	M each side mm/in.	O mm/in.	Dia. Q mm/in.	Weight (lb.)
CCS8SJLG	80	174	162	56	120	107	75	25	12	80	122	152	13	45.5
		6.85	6.38	2.19	4.72	4.21	2.95	0.98	0.47	3.15	4.80	5.98	0.51	

COMPACT® Pendant Arm Series 4
Wall Joint


Welded steel plate construction finished with RAL 7035 light-gray polyester powder paint. Mounts equipment to vertical surface. Swivel range is approximately 180 degrees. Includes bellows with zipper, seals and setscrews. Adjustable tension at pivot point. Rotational limiter is optional. Mounting hardware not provided.

Bulletin: CS4

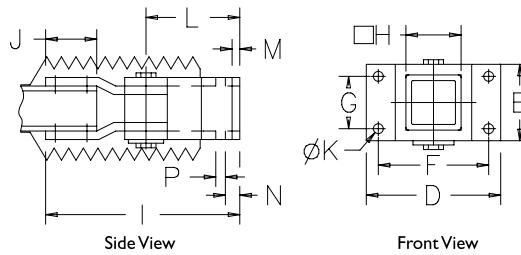


Catalog Number	System	D mm/in.	E mm/in.	F mm/in.	G mm/in.	H each side mm/in.	I mm/in.	J mm/in.	Dia. K mm/in.	L mm/in.	M mm/in.	Weight (lb.)
CCS8WJRLG	80	161 6.34	104 4.09	138 5.43	80 3.15	80 3.15	300 11.81	100 3.94	13 0.51	135 5.31	10 0.39	21.6

Cable Wall Joint


Welded steel plate construction finished with RAL 7035 light-gray polyester powder paint. Mounts equipment to vertical surface. Provides cable access to inside of pendant system from above or below. Swivel range approximately 180 degrees. Includes bellows with zipper, seal and setscrews. Adjustable tension at pivot point. Rotation limiter is optional. Mounting hardware not provided.

Bulletin: CS4



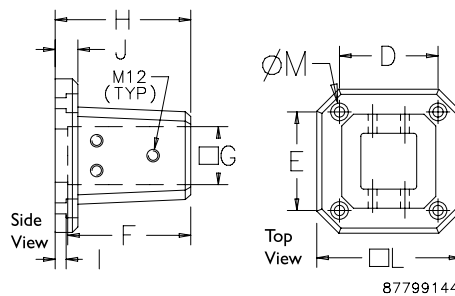
C2753-C

Catalog Number	System	D mm/in.	E mm/in.	F mm/in.	G mm/in.	H each side mm/in.	I mm/in.	J mm/in.	Dia. K mm/in.	L mm/in.	M mm/in.	N mm/in.	P mm/in.	Weight (lb.)
CCS8WJCRLG	80	165 6.50	104 4.09	138 5.43	80 3.15	80 3.15	330 12.99	100 3.94	13 0.51	165 6.50	10 0.39	20 0.79	60 2.36	20.9

Wall Flange


Wall Flange expands mounting options to include wall-mount as well as horizontal tube applications. Cast iron construction finished with RAL 7035 light-gray polyester powder paint. Setscrews, gasket and seals are included. Mounting hardware not provided.

Bulletin: CS4



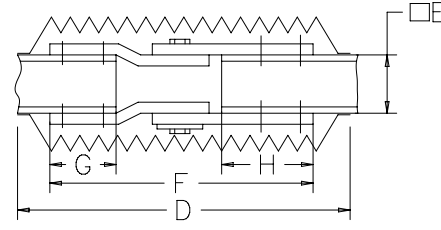
87799144

Catalog Number	System	L each side mm/in.	H mm/in.	D mm/in.	E mm/in.	F mm/in.	G each side mm/in.	I mm/in.	J mm/in.	Dia. M mm/in.	Weight (lb.)
CCS8WFLG	80	174 6.85	160 6.30	122 4.80	122 4.80	143 5.63	80 3.15	12 0.47	25 0.98	13 0.51	20.1

COMPACT® Pendant Arm Series 4
Intermediate Joint


Welded steel plate construction finished with RAL 7035 light-gray polyester powder paint. Mounts to pendant tube. Swivel range is approximately 180 degrees. Setscrews and bellows with zipper are included. Rotational limiter is optional.

Bulletin: CS4



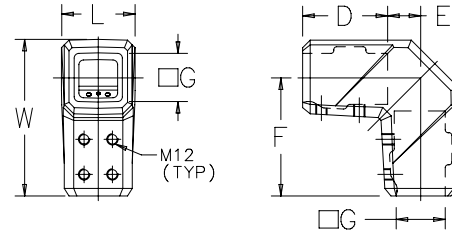
87799146

Catalog Number	System	D mm/in.	E each side mm/in.	F mm/in.	G mm/in.	H mm/in.	Weight (lb.)
CCS8IJRLG	80	400 15.75	80 3.15	330 12.99	100 3.94	100 3.94	21.4

Elbow


Cast aluminum with RAL 7035 light-gray polyester powder paint finish. Removable access plate. Setscrews and gaskets are included.

Bulletin: CS4



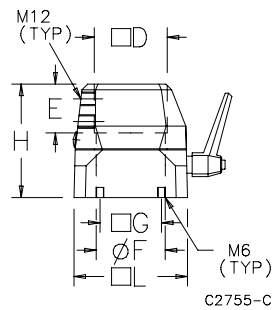
87799402

Catalog Number	System	L mm/in.	W mm/in.	D mm/in.	E mm/in.	F mm/in.	Each side mm/in.	Weight (lb.)
CCS8ELLG	80	108 4.25	225 8.86	120 4.72	50 1.97	170 6.69	80 3.15	18.7

COMPACT® Pendant Arm Series 4
Flange Coupling


Flange Coupling mounts to enclosure, enabling enclosure to be rotated 300 degrees. Enclosure can be locked in position. Safety stop and maintenance-free bearing. Finish is RAL 7035 light-gray polyester powder paint. Includes installation instructions, setscrews, gaskets and mounting hardware.

Bulletin: CS4

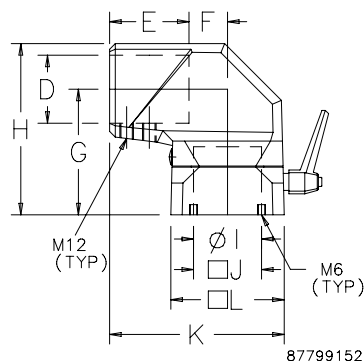


Catalog Number	System	Leach side mm/in.	H mm/in.	D each side mm/in.	E mm/in.	Dia. F mm/in.	G each side mm/in.	Weight (lb.)
CCS8FCLG	80	120 4.72	110 4.33	80 3.15	53 2.09	91 3.58	80 3.15	7.2

Flange Elbow Coupling


Coupling mounts to enclosure, enabling enclosure to be rotated 300 degrees. Enclosure can be locked in position. Removable access plates. Finish is RAL 7035 light-gray polyester powder paint. Setscrews, gasket and mounting hardware are included.

Bulletin: CS4



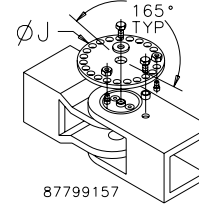
Catalog Number	System	Leach side mm/in.	H mm/in.	D each side mm/in.	E mm/in.	F mm/in.	G mm/in.	Dia. I mm/in.	J each side mm/in.	K mm/in.	Weight (lb.)
CCS8FECLG	80	120 4.72	173 6.81	80 3.15	90 3.54	54 2.13	121 4.76	91 3.58	80 3.15	204 8.03	9.5

COMPACT® Pendant Arm Series 4
Rotation Limiter


Accessory for use with Wall Joint, Cable Wall Joint and Intermediate Joint. Limits the rotation of these joints which normally rotate 180 degrees. Rotation Limiter provides stops in 15-degree increments. The limiter is a heavy-duty steel disk that attaches to the pivot point on each joint. Moveable stop pins provide adjustment.

Bulletin: CS4

Catalog Number	System	Dia. J (mm)	Dia. J (in.)	Weight (lb.)
CCS814RL	80	119	4.70	1.3


Swivel Tilt


Mounts between suspension arm and HMI enclosure to provide both swivel and tilt options for machine operator. Cast aluminum assembly finished with RAL 7035 light-gray polyester powder paint. Center opening for control cables. Tilt knob allows infinite tilt adjustment from horizontal to 30 degrees. Swivel allows 300-degree maximum rotation. Setscrews, seals and enclosure mounting screws are included.

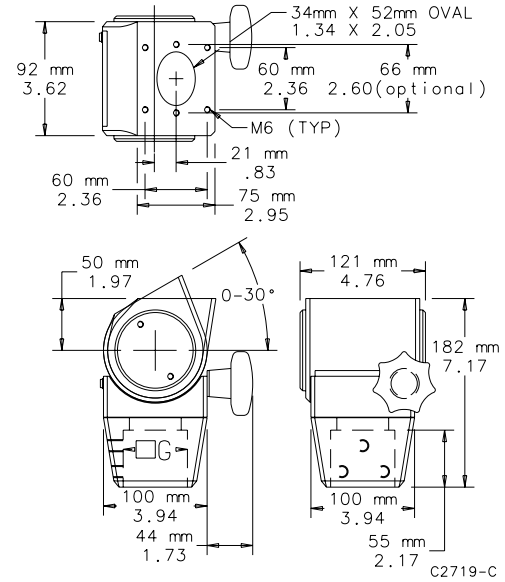
Maximum load for overhead applications is 110 lb. (50 kg).

Bulletin: CS4



Catalog Number	System	G (mm) each side	G (in.) each side	Weight (lb.)
CCS85TBLG	80	80	3.15	7.0

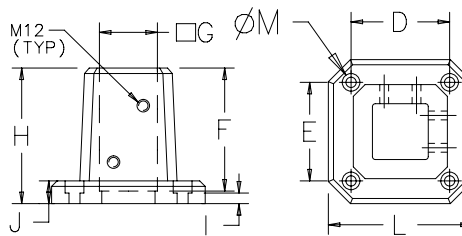
Not recommended to be used in combination with base with cutout for sloped-front PBSK66 or PBSK66SS.



COMPACT® Pendant Arm Series 4
Base Bracket

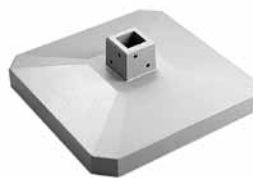

For vertical-tube mounting or to mount tube to floor. Bracket is cast iron finished with RAL 7035 light-gray polyester powder paint. Setscrews, gasket and seals are included. Mounting hardware not provided.

Bulletin: CS4



87799161

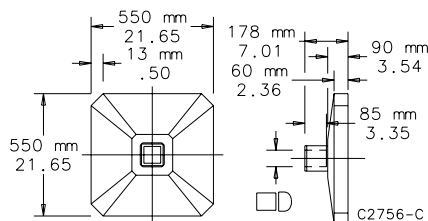
Catalog Number	System	L each side mm/in.	H mm/in.	D mm/in.	E mm/in.	F mm/in.	G each side mm/in.	I mm/in.	J mm/in.	Dia. M mm/in.	Weight (lb.)
CCS8BBLG	80	174 6.85	160 6.30	122 4.80	122 4.80	143 5.63	80 3.15	12 0.47	25 0.98	13 0.51	20.4

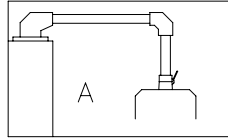
Pedestal Base


Cast aluminum one-piece heavy-duty construction with RAL 7035 light-gray polyester powder paint finish. Includes all hardware for attaching tubes. Optional casters or levelers can be installed on pedestal base. Levelers and fixed or swivel casters are available in pairs (must order two pair).

Bulletin: CS4

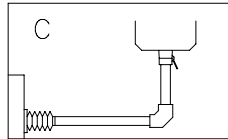
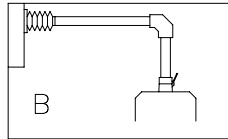
Catalog Number	System	D (mm) each side	D (in.) each side	Weight (lb.)
CCS8PBLG	80	80 x 80	3.15 x 3.15	31.5



COMPACT® Pendant Arm Series 4
COMPACT® Pendant Arm Series 4 Configurations
A


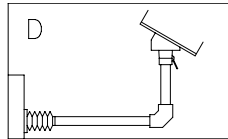
87799186

Description	Qty.	Catalog Number		
		(System 50)	(System 60)	(System 80)
Set-up joint	1	CCS5SJLG	CCS6SJLG	CCS8SJLG
Elbow	1	CCS5ELLG	CCS6ELLG	CCS8ELLG
Flange coupling or Swivel tilt	1	CCS5FCLG	CCS6FCLG	CCS8FCLG
	1	CCS5STBLG	CCS6STBLG	CCS8STBLG

B and C


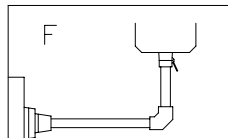
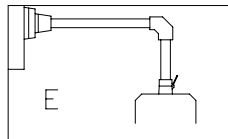
87799187

Description	Qty.	Catalog Number		
		(System 50)	(System 60)	(System 80)
Wall joint or Cable wall joint	1	CCS5WJRLG	CCS6WJRLG	CCS8WJRLG
	1	CCS5WJCRLG	CCS6WJCRLG	CCS8WJCRLG
Elbow	1	CCS5ELLG	CCS6ELLG	CCS8ELLG
Flange coupling or Swivel tilt	1	CCS5FCLG	CCS6FCLG	CCS8FCLG
	1	CCS5STBLG	CCS6STBLG	CCS8STBLG

D


87799188

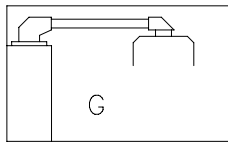
Description	Qty.	Catalog Number		
		(System 50)	(System 60)	(System 80)
Wall joint or Cable wall joint	1	CCS5WJRLG	CCS6WJRLG	CCS8WJRLG
	1	CCS5WJCRLG	CCS6WJCRLG	CCS8WJCRLG
Elbow	1	CCS5ELLG	CCS6ELLG	CCS8ELLG
Flange coupling	1	CCS5FCLG	CCS6FCLG	CCS8FCLG
Angle adapter 15° or Angle adapter 30°	1	CCS568AA15LG	CCS568AA15LG	CCS568AA15LG
	1	CCS568AA30LG	CCS568AA30LG	CCS568AA30LG

E and F


87799189

Description	Qty.	Catalog Number		
		(System 50)	(System 60)	(System 80)
Wall flange	1	CCS5WFLG	CCS6WFLG	CCS8WFLG
Elbow	1	CCS5ELLG	CCS6ELLG	CCS8ELLG
Flange coupling or Swivel tilt	1	CCS5FCLG	CCS6FCLG	CCS8FCLG
	1	CCS5STBLG	CCS6STBLG	CCS8STBLG

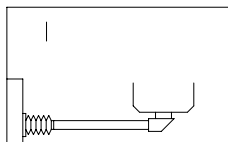
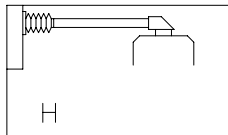
G



87799190

Description	Qty.	Catalog Number		
		(System 50)	(System 60)	(System 80)
Set-up joint	1	CCS5SJLG	CCS6SJLG	CCS8SJLG
Flange elbow coupling	1	CCS5FECLG	CCS6FECLG	CCS8FECLG

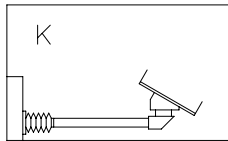
H and I



87799191

Description	Qty.	Catalog Number		
		(System 50)	(System 60)	(System 80)
Wall joint or Cable wall joint	1	CCS5WJRLG	CCS6WJRLG	CCS8WJRLG
	1	CCS5WJCRLG	CCS6WJCRLG	CCS8WJCRLG
Flange elbow coupling	1	CCS5FECLG	CCS6FECLG	CCS8FECLG

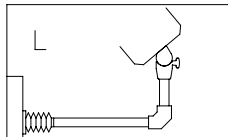
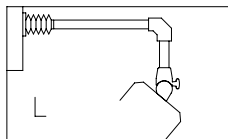
K



87799192

Description	Qty.	Catalog Number		
		(System 50)	(System 60)	(System 80)
Wall joint or Cable wall joint	1	CCS5WJRLG	CCS6WJRLG	CCS8WJRLG
	1	CCS5WJCRLG	CCS6WJCRLG	CCS8WJCRLG
Flange elbow coupling	1	CCS5FCLG	CCS6FCLG	CCS8FCLG
Angle adapter 15° or Angle adapter 30°	1	CCS568AA15LG	CCS568AA15LG	CCS568AA15LG
	1	CCS568AA30LG	CCS568AA30LG	CCS568AA30LG

L



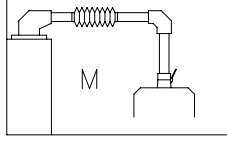
87799193

Description	Qty.	Catalog Number		
		(System 50)	(System 60)	(System 80)
Wall joint or Cable wall joint	1	CCS5WJRLG	CCS6WJRLG	CCS8WJRLG
	1	CCS5WJCRLG	CCS6WJCRLG	CCS8WJCRLG
Elbow	1	CCS5ELLG	CCS6ELLG	CCS8ELLG
Swivel tilt ^a	1	CCS5STBLG	CCS6STBLG	CCS8STBLG

^aMaximum load for overhead applications is 110 lb. (50 kg) including enclosure.

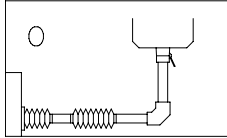
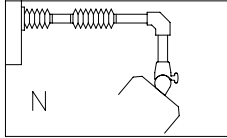
Note to the Specifier:

1. Select pendant system sizing using the COMPACT Series 4 load capacity chart.
2. Tube catalog numbers are not included in configuration tables.

COMPACT® Pendant Arm Series 4
M


87799194

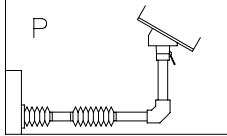
Description	Qty.	Catalog Number		
		(System 50)	(System 60)	(System 80)
Set-up joint	1	CCS5SJLG	CCS6SJLG	CCS8SJLG
Intermediate joint	1	CCS5IJRLG	CCS6IJRLG	CCS8IJRLG
Elbow	1	CCS5ELLG	CCS6ELLG	CCS8ELLG
Flange coupling or Swivel tilt	1	CCS5FCLG	CCS6FCLG	CCS8FCLG
	1	CCS5STBLG	CCS6STBLG	CCS8STBLG

N and O


87799195

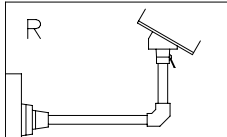
Description	Qty.	Catalog Number		
		(System 50)	(System 60)	(System 80)
Wall joint or Cable wall joint	1	CCS5WJRLG	CCS6WJRLG	CCS8WJRLG
	1	CCS5WJCRLG	CCS6WJCRLG	CCS8WJCRLG
Intermediate joint	1	CCS5IJRLG	CCS6IJRLG	CCS8IJRLG
Elbow	1	CCS5ELLG	CCS6ELLG	CCS8ELLG
Flange coupling or Swivel tilt ^a	1	CCS5FCLG	CCS6FCLG	CCS8FCLG
	1	CCS5STBLG	CCS6STBLG	CCS8STBLG

^aMaximum load for overhead applications is 110 lb. (50 kg) including enclosure.

P


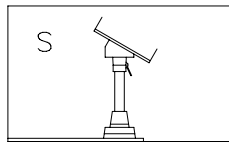
87799196

Description	Qty.	Catalog Number		
		(System 50)	(System 60)	(System 80)
Wall joint or Cable wall joint	1	CCS5WJRLG	CCS6WJRLG	CCS8WJRLG
	1	CCS5WJCRLG	CCS6WJCRLG	CCS8WJCRLG
Intermediate joint	1	CCS5IJRLG	CCS6IJRLG	CCS8IJRLG
Elbow	1	CCS5ELLG	CCS6ELLG	CCS8ELLG
Flange coupling	1	CCS5FCLG	CCS6FCLG	CCS8FCLG
Angle adapter 15° or Angle adapter 30°	1	CCS568AA15LG	CCS568AA15LG	CCS568AA15LG
	1	CCS568AA30LG	CCS568AA30LG	CCS568AA30LG

R


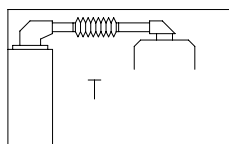
87799197

Description	Qty.	Catalog Number		
		(System 50)	(System 60)	(System 80)
Wall flange	1	CCS5WFLG	CCS6WFLG	CCS8WFLG
Elbow	1	CCS5ELLG	CCS6ELLG	CCS8ELLG
Flange coupling	1	CCS5FCLG	CCS6FCLG	CCS8FCLG
Angle adapter 15° or Angle adapter 30°	1	CCS568AA15LG	CCS568AA15LG	CCS568AA15LG
	1	CCS568AA30LG	CCS568AA30LG	CCS568AA30LG

COMPACT® Pendant Arm Series 4
S


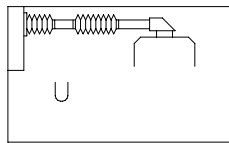
87799198

Description	Qty.	Catalog Number		
		(System 50)	(System 60)	(System 80)
Base bracket	1	CCS5BBLG	CCS6BBLG	CCS8BBLG
Flange coupling	1	CCS5FCLG	CCS6FCLG	CCS8FCLG
Angle adapter 15° or	1	CCS568AA15LG	CCS568AA15LG	CCS568AA15LG
Angle adapter 30°	1	CCS568AA30LG	CCS568AA30LG	CCS568AA30LG

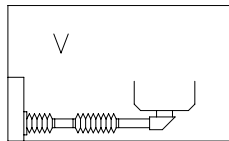
T


87799199

Description	Qty.	Catalog Number		
		(System 50)	(System 60)	(System 80)
Set-up joint	1	CCS5SJLG	CCS6SJLG	CCS8SJLG
Intermediate joint	1	CCS5IJRLG	CCS6IJRLG	CCS8IJRLG
Flange elbow coupling	1	CCS5FECLG	CCS6FECLG	CCS8FECLG

U and V


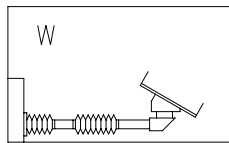
U



V

87799200

Description	Qty.	Catalog Number		
		(System 50)	(System 60)	(System 80)
Wall joint or	1	CCS5WJRLG	CCS6WJRLG	CCS8WJRLG
Cable wall joint	1	CCS5WJCRLG	CCS6WJCRLG	CCS8WJCRLG
Intermediate joint	1	CCS5IJRLG	CCS6IJRLG	CCS8IJRLG
Flange elbow coupling	1	CCS5FCLG	CCS6FCLG	CCS8FCLG

W


W

C2803-C

Description	Qty.	Catalog Number		
		(System 50)	(System 60)	(System 80)
Wall joint or	1	CCS5WJRLG	CCS6WJRLG	CCS8WJRLG
Cable wall joint	1	CCS5WJCRLG	CCS6WJCRLG	CCS8WJCRLG
Intermediate joint	1	CCS5IJRLG	CCS6IJRLG	CCS8IJRLG
Flange elbow coupling	1	CCS5FCLG	CCS6FCLG	CCS8FCLG
Angle adapter 15° or	1	CCS568AA15LG	CCS568AA15LG	CCS568AA15LG
Angle adapter 30°	1	CCS568AA30LG	CCS568AA30LG	CCS568AA30LG

Note to the Specifier:

1. Select pendant system sizing using the COMPACT Series 4 load capacity chart.
2. Tube catalog numbers are not included in configuration tables.